

Application:

- Suitable for housing Allen-Bradley Bulletin 1494 D and F flange mount disconnect switches
- Designed for indoor use and will protect components from falling dust, dirt, oil, and water

Enclosure features:

- Fabricated from 14 gauge steel with seam welds that are ground smooth, except mounting bracket components which are 304 stainless steel provides superior corrosion resistance on wear points
- Includes a removable 12 gauge steel sub plate
- Door gasket is ¼" x ¾" Poron
- Ground studs are included on both the door and enclosure body
- Enclosure is finished in ANSI-61 grey polyester powder coating over a phosphated surface
- Sub plate is finished in a white polyester powder coating over a phosphated surface

Industry Standards:

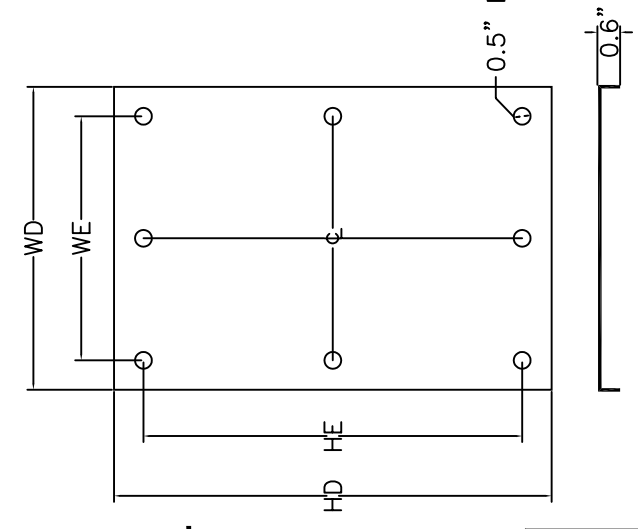
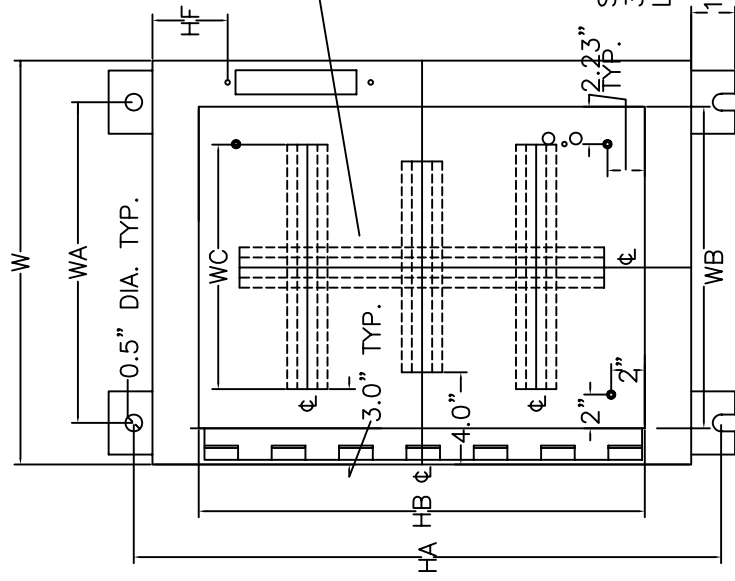
- NEMA 12
- CSA Type 12
- UL Type 12

Approval:

- CSA NRTL/C approved
- UL approved

THE SUB PLATE IS SUPPORTED INSIDE THE ENCLOSURE USING STAND OFF BOLTS. TYPICALLY THERE ARE 2 BOLTS COMMON TO EACH SIDE UNLESS THE SUB PLATE SIDE IS LONGER THAN 27", IN WHICH CASE A THIRD BOLT, CENTRED, IS ADDED. STIFFENING FOLDS ARE ADDED IF A SIDE IS LONGER THAN 21".

A VERTICAL DOOR STIFFENER IS ADDED IF THE ENCLOSURE HEIGHT IS GREATER THAN 36"



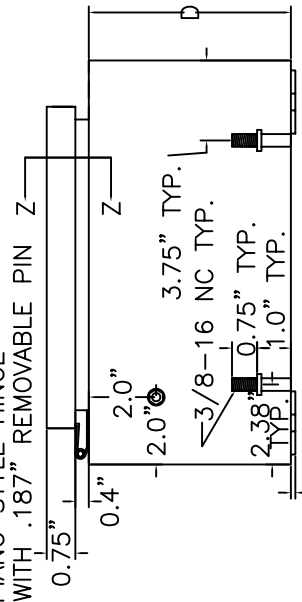
THREE HORIZONTAL STIFFENERS ARE ADDED INSIDE THE ENCLOSURE IF ITS HEIGHT IS GREATER THAN 36"

NOTE 1: MOUNTING BRACKETS ARE MADE OF 304 SS.

NOTE 2: ALL GROUND STUDS AND STAND OFF BOLTS ARE SUPPLIED WITH NUTS AND WASHERS

NOTE 3: SEE DISCONNECT KNOCK OUT DRAWING FOR HANDLE KNOCK OUT DETAILS

16 GAUGE 304 SS PIANO STYLE HINGE WITH .187" REMOVABLE PIN Z

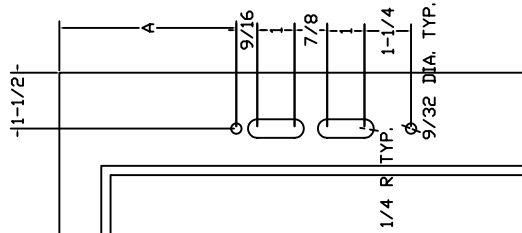


SECTION Z-Z

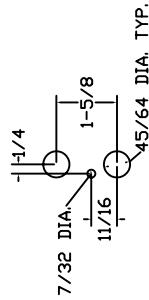
REV	DESCRIPTION	DATE	APPVL
	ENCLOSURES DIRECT INC.		
	WALL MOUNT NEMA 12 WITH AB 1494D AND AB 1494F DISCONNECT CUT OUT		
	MODEL NUMBER SERIES N12DA		

KNOCK OUT FOR THE FOLLOWING DISCONNECTS:

- 1) ALLEN-BRADLEY 1494V
- 2) ABB
- 3) CUTLER-HAMMER C361
- 4) GENERAL ELECTRIC TDA
- 5) ITE MAX FLEX
- 6) SQUARE-D 9422

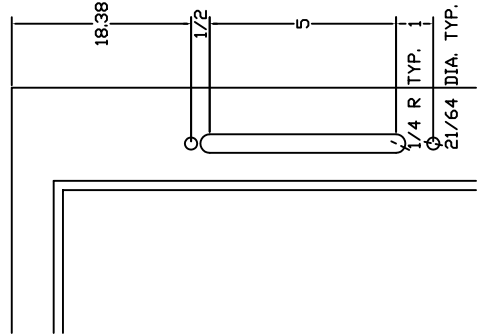


PANEL DEPTH	A
8"	4.75"
10"	7.09"
12"	11.62"
16"	11.62"



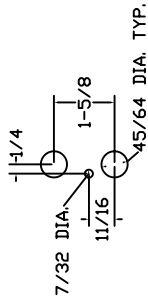
DOOR KNOCK OUT DETAIL

SPECIAL KNOCK OUT FOR 400A



PANEL DEPTH	A
16"	18.38"

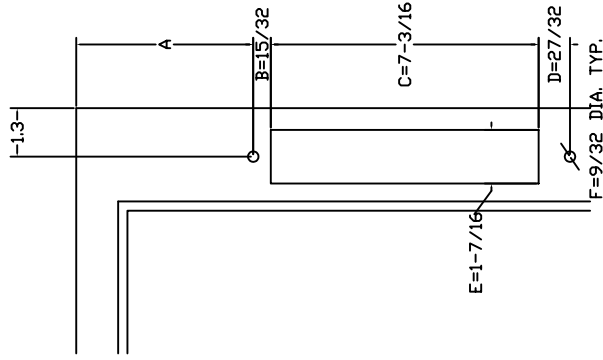
NOTE: WHEN A=18.38", THE PANEL WILL ACCOMMODATE THE 400A DISCONNECT.



DOOR KNOCK OUT DETAIL

KNOCK OUT FOR THE FOLLOWING DISCONNECTS:

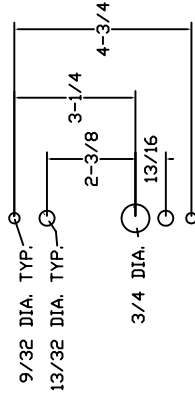
- 1) ALLEN-BRADLEY 1494D
- 2) ALLEN-BRADLEY 1494F



PANEL DEPTH	A
8"	3.84"
10"	6.75"
12"	9.50"
12"	10.50"
16"	9.50"

NOTE: WHEN A=10.50", THE PANEL WILL ACCOMMODATE THE 200A DISCONNECT. USE SLOT AND HOLE DIMENSIONS:

- B=13/16
- C=9-1/2
- D=13/16
- E=1-11/16
- F=21/64



DOOR KNOCK OUT DETAIL

REV	DESCRIPTION	DATE	APPL
	ENCLOSURES DIRECT INC.		
	WALL MOUNT NEMA 12 FLANGE STYLE DISCONNECT KNOCK OUT DETAIL		
	MODEL NUMBER SERIES N12D, N12DA, & N4D		



NEMA 12 ENCLOSURE FOR A-B FIXED DEPTH DISCONNECT - SERIES N12DA

H	W	D	Model	Weight	HA	WA	HB	WB	HC	WC	HD	WD	HE	WE	HF	Latching
20	21.38	8	N12DA202108	50	21.3	15.5	18.3	18.3	XX	XX	17	17	15.25	15.25	3.84	2-point
20	21.38	10	N12DA202110	52	21.3	15.5	18.3	18.3	XX	XX	17	17	15.25	15.25	6.75	2-point
20	21.38	12	N12DA202112	54	21.3	15.5	18.3	18.3	XX	XX	17	17	15.25	15.25	9.5	2-point
24	21.38	8	N12DA242108	58	25.25	15.5	22.13	18.13	XX	XX	21	17	19.25	15.25	3.84	2-point
24	21.38	10	N12DA242110	61	25.25	15.5	22.13	18.13	XX	XX	21	17	19.25	15.25	6.75	2-point
24	21.38	12	N12DA242112	64	25.25	15.5	22.13	18.13	XX	XX	21	17	19.25	15.25	9.5	2-point
24	25.38	8	N12DA242508	68	25.25	19.5	22.13	22.13	XX	XX	21	21	19.25	19.25	3.84	2-point
24	25.38	10	N12DA242510	70	25.25	19.5	22.13	22.13	XX	XX	21	21	19.25	19.25	6.75	2-point
24	25.38	12	N12DA242512	73	25.25	19.5	22.13	22.13	XX	XX	21	21	19.25	19.25	9.5	2-point
30	21.38	8	N12DA302108	70	31.25	15.5	28.13	18.13	XX	XX	27	17	25.25	15.25	3.84	2-point
30	21.38	10	N12DA302110	76	31.25	15.5	28.13	18.13	XX	XX	27	17	25.25	15.25	6.75	2-point
30	21.38	12	N12DA302112	82	31.25	15.5	28.13	18.13	XX	XX	27	17	25.25	15.25	9.5	2-point
30	25.38	8	N12DA302508	82	31.25	19.5	28.13	22.13	XX	XX	27	21	25.25	19.25	3.84	2-point
30	25.38	10	N12DA302510	86	31.25	19.5	28.13	22.13	XX	XX	27	21	25.25	19.25	6.75	2-point
30	25.38	12	N12DA302512	90	31.25	19.5	28.13	22.13	XX	XX	27	21	25.25	19.25	9.5	2-point
30	31.38	8	N12DA303108	102	31.25	25.5	28.13	28.13	XX	XX	27	27	25.25	25.25	3.84	2-point
30	31.38	10	N12DA303110	108	31.25	25.5	28.13	28.13	XX	XX	27	27	25.25	25.25	6.75	2-point
30	31.38	12	N12DA303112	114	31.25	25.5	28.13	28.13	XX	XX	27	27	25.25	25.25	9.5	2-point
36	25.38	8	N12DA362508	96	37.25	19.5	34.13	22.13	XX	XX	33	21	31.25	19.25	3.84	2-point
36	25.38	10	N12DA362510	102	37.25	19.5	34.13	22.13	XX	XX	33	21	31.25	19.25	6.75	2-point

1-877-EDIRECT (334-7328)
ENCLOSURES DIRECT INC.

FAX: (613) 723-4479
sales@buyedi.com



NEMA 12 ENCLOSURE FOR A-B FIXED DEPTH DISCONNECT - SERIES N12DA

H	W	D	Model	Weight	HA	WA	HB	WB	HC	WC	HD	WD	HE	WE	HF	Latching
36	25.38	12	N12DA362512	108	37.25	19.5	34.13	22.13	XX	XX	33	21	31.25	19.25	9.5	2-point
36	25.38	16	N12DA362516	112	37.25	19.5	34.13	22.13	XX	XX	33	21	31.25	19.25	9.5	2-point
36	31.38	8	N12DA363108	120	37.25	25.5	34.13	28.13	XX	XX	33	27	31.25	25.25	3.84	2-point
36	31.38	10	N12DA363110	126	37.25	25.5	34.13	28.13	XX	XX	33	27	31.25	25.25	6.75	2-point
36	31.38	12	N12DA363112	132	37.25	25.5	34.13	28.13	XX	XX	33	27	31.25	25.25	9.5	2-point
36	31.38	16	N12DA363116	140	37.25	25.5	34.13	28.13	XX	XX	33	27	31.25	25.25	9.5	2-point
36	37.38	8	N12DA363708	142	37.25	31.5	34.13	34.13	XX	XX	33	33	31.25	31.25	3.84	2-point
36	37.38	10	N12DA363710	148	37.25	31.5	34.13	34.13	XX	XX	33	33	31.25	31.25	6.75	2-point
36	37.38	12	N12DA363712	156	37.25	31.5	34.13	34.13	XX	XX	33	33	31.25	31.25	9.5	2-point
36	37.38	16	N12DA363716	166	37.25	31.5	34.13	34.13	XX	XX	33	33	31.25	31.25	9.5	2-point
42	25.38	8	N12DA422508	110	43.25	19.5	40.13	22.13	36	18	39	21	37.25	19.25	3.84	3-point
42	25.38	10	N12DA422510	116	43.25	19.5	40.13	22.13	36	18	39	21	37.25	19.25	6.75	3-point
42	25.38	12	N12DA422512	124	43.25	19.5	40.13	22.13	36	18	39	21	37.25	19.25	9.5	3-point
42	25.38	16	N12DA422516	134	43.25	19.5	40.13	22.13	36	18	39	21	37.25	19.25	9.5	3-point
42	31.38	8	N12DA423108	132	43.25	25.5	40.13	28.13	36	24	39	27	37.25	25.25	3.84	3-point
42	31.38	10	N12DA423110	140	43.25	25.5	40.13	28.13	36	24	39	27	37.25	25.25	6.75	3-point
42	31.38	12	N12DA423112	150	43.25	25.5	40.13	28.13	36	24	39	27	37.25	25.25	9.5	3-point
42	31.38	16	N12DA423116	162	43.25	25.5	40.13	28.13	36	24	39	27	37.25	25.25	9.5	3-point
42	37.38	8	N12DA423708	182	43.25	31.5	40.13	34.13	36	30	39	33	37.25	31.25	3.84	3-point
42	37.38	10	N12DA423710	190	43.25	31.5	40.13	34.13	36	30	39	33	37.25	31.25	6.75	3-point

1-877-EDIRECT (334-7328)
ENCLOSURES DIRECT INC.

FAX: (613) 723-4479
sales@buyedi.com



NEMA 12 ENCLOSURE FOR A-B FIXED DEPTH DISCONNECT - SERIES N12DA

H	W	D	Model	Weight	HA	WA	HB	WB	HC	WC	HD	WD	HE	WE	HF	Latching
42	37.38	12	N12DA423712	198	43.25	31.5	40.13	34.13	36	30	39	33	37.25	31.25	9.5	3-point
42	37.38	16	N12DA423716	214	43.25	31.5	40.13	34.13	36	30	39	33	37.25	31.25	9.5	3-point
48	25.38	8	N12DA482508	122	49.25	19.5	46.13	22.13	42	18	45	21	43.25	19.25	3.84	3-point
48	25.38	10	N12DA482510	131	49.25	19.5	46.13	22.13	42	18	45	21	43.25	19.25	6.75	3-point
48	25.38	12	N12DA482512	140	49.25	19.5	46.13	22.13	42	18	45	21	43.25	19.25	9.5	3-point
48	25.38	16	N12DA482516	157	49.25	19.5	46.13	22.13	42	18	45	21	43.25	19.25	9.5	3-point
48	31.38	8	N12DA483108	162	49.25	25.5	46.13	28.13	42	24	45	27	43.25	25.25	3.84	3-point
48	31.38	10	N12DA483110	173	49.25	25.5	46.13	28.13	42	24	45	27	43.25	25.25	6.75	3-point
48	31.38	12	N12DA483112	184	49.25	25.5	46.13	28.13	42	24	45	27	43.25	25.25	9.5	3-point
48	31.38	16	N12DA483116	204	49.25	25.5	46.13	28.13	42	24	45	27	43.25	25.25	9.5	3-point
48	37.38	8	N12DA483708	201	49.25	31.5	46.13	34.13	42	30	45	33	43.25	31.25	3.84	3-point
48	37.38	10	N12DA483710	208	49.25	31.5	46.13	34.13	42	30	45	33	43.25	31.25	6.75	3-point
48	37.38	12	N12DA483712A	215	49.25	31.5	46.13	34.13	42	30	45	33	43.25	31.25	10.5	3-point
48	37.38	12	N12DA483712	215	49.25	31.5	46.13	34.13	42	30	45	33	43.25	31.25	9.5	3-point
48	37.38	16	N12DA483716	230	49.25	31.5	46.13	34.13	42	30	45	33	43.25	31.25	9.5	3-point

1-877-EDIRECT (334-7328)
ENCLOSURES DIRECT INC.

FAX: (613) 723-4479
sales@buyedi.com