

Application:

- Suitable for housing the following flange mount disconnect switches:
 - 1) Allen-Bradley 1494V;
 - 2) ABB Controls variable depth;
 - 3) Cutler-Hammer C361 & C371;
 - 4) General Electric STDA;
 - 5) I-T-E Max-Flex; and
 - 6) Square D Class 9422.
- Suitable for outdoor use and will protect components from falling dust, dirt, oil, and hose directed water

Enclosure features:

- Fabricated from 14 gauge steel with seam welds that are ground smooth, except door clamps, clamp bases, and mounting bracket components which are 304 stainless steel provide superior corrosion resistance
- Includes a removable 12 gauge steel sub plate
- Door gasket is ¼" x ¾" Poron
- Ground studs are included on both the door and enclosure body
- Enclosure is finished in ANSI-61 grey polyester powder coating over a phosphated surface
- Sub plate is finished in a white polyester powder coating over a phosphated surface

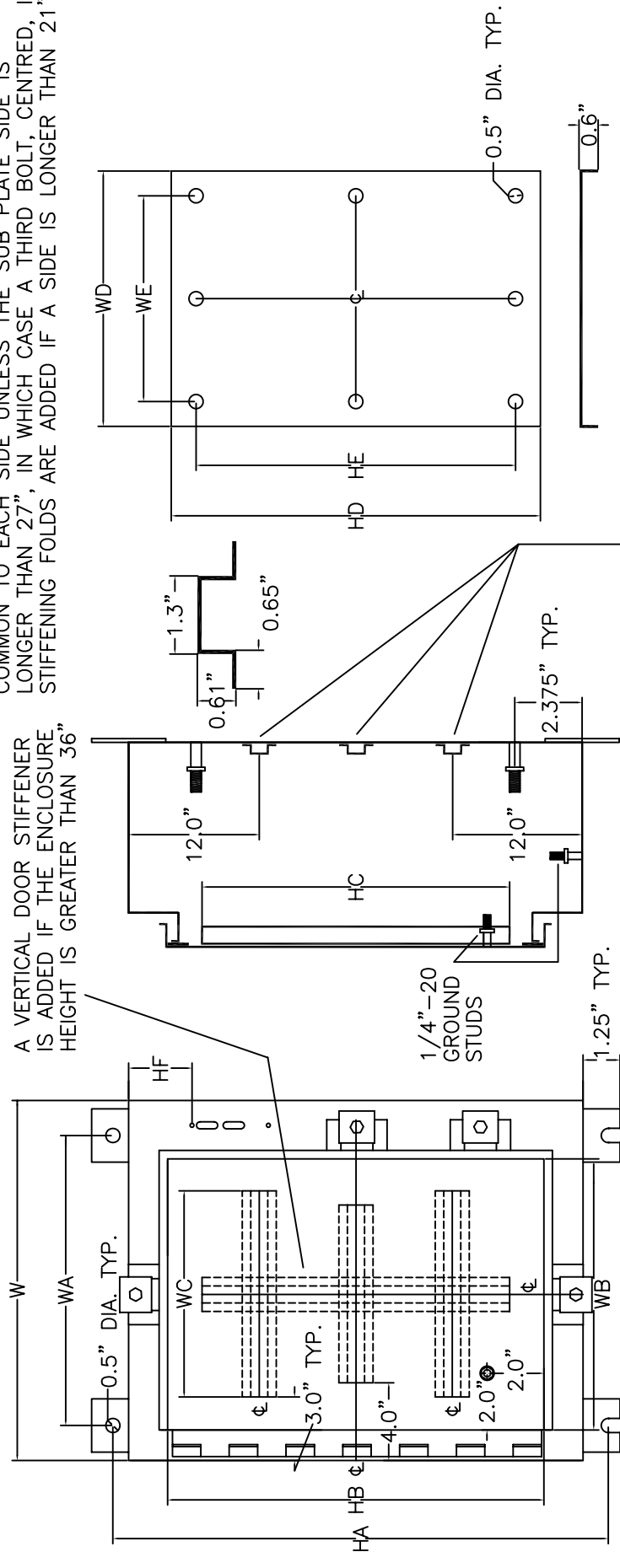
Industry Standards:

- NEMA 4, 4X
- CSA Type 4, 4X
- UL Type 4, 4X

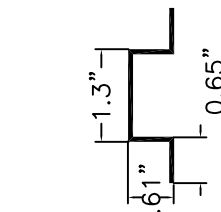
Approval:

- CSA NRTL/C approved
- UL approved

THE SUB PLATE IS SUPPORTED INSIDE THE ENCLOSURE USING STAND OFF BOLTS. TYPICALLY THERE ARE 2 BOLTS COMMON TO EACH SIDE UNLESS THE SUB PLATE SIDE IS LONGER THAN 27", IN WHICH CASE A THIRD BOLT, CENTRED, IS ADDED. STIFFENING FOLDS ARE ADDED IF A SIDE IS LONGER THAN 21".



A VERTICAL DOOR STIFFENER IS ADDED IF THE ENCLOSURE HEIGHT IS GREATER THAN 36"



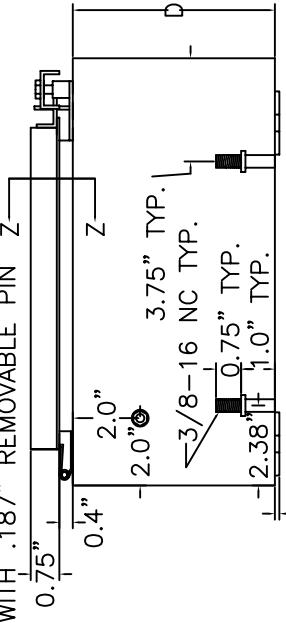
THREE HORIZONTAL STIFFENERS ARE ADDED INSIDE THE ENCLOSURE IF ITS HEIGHT IS GREATER THAN 36"

NOTE 1: CLAMPS, CLAMP BASES, 1/4"-28 NF CLAMP BOLTS, WASHERS, AND RETAINING SPRINGS, PLUS MONTING BRACKETS ARE MADE OF 304 SS.

NOTE 2: ALL GROUND STUDS AND STAND OFF BOLTS ARE SUPPLIED WITH NUTS AND WASHERS

NOTE 3: SEE DISCONNECT KNOCK OUT DRAWING FOR HANDLE KNOCK OUT DETAILS

16 GAUGE 304 SS PIANO STYLE HINGE WITH .187" REMOVABLE PIN Z



0.135" TYP.

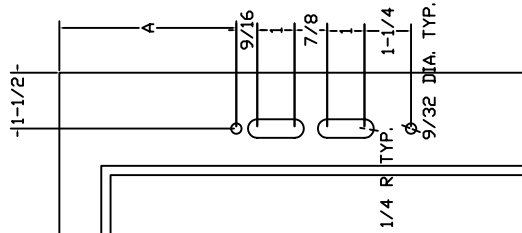


SECTION Z-Z

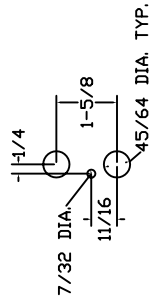
REV	DESCRIPTION	DATE	APPVL
	ENCLOSURES DIRECT INC.		
	CLAMP STYLE WALL MOUNT NEMA 4, 4X WITH FLANGED DISCONNECT CUT OUT		
	MODEL NUMBER SERIES N4D		

KNOCK OUT FOR THE FOLLOWING DISCONNECTS:

- 1) ALLEN-BRADLEY 1494V
- 2) ABB
- 3) CUTLER-HAMMER C361
- 4) GENERAL ELECTRIC TDA
- 5) ITE MAX FLEX
- 6) SQUARE-D 9422

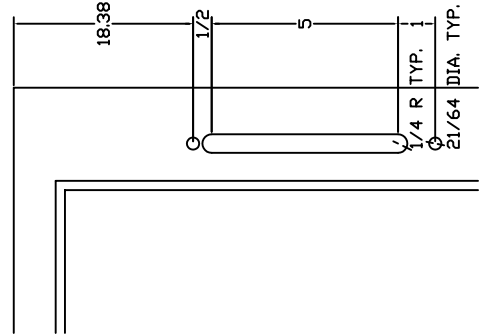


PANEL DEPTH	A
8"	4.75"
10"	7.09"
12"	11.62"
16"	11.62"



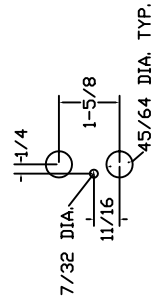
DOOR KNOCK OUT DETAIL

SPECIAL KNOCK OUT FOR 400A



PANEL DEPTH	A
16"	18.38"

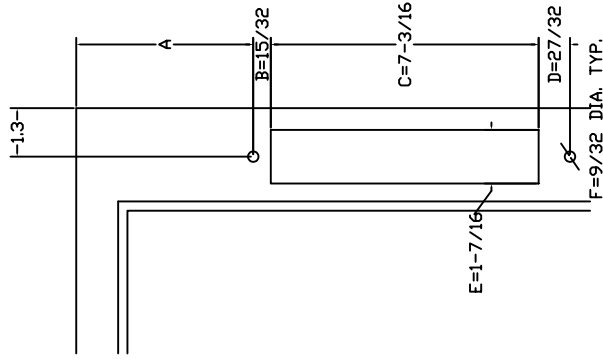
NOTE: WHEN A=18.38", THE PANEL WILL ACCOMMODATE THE 400A DISCONNECT.



DOOR KNOCK OUT DETAIL

KNOCK OUT FOR THE FOLLOWING DISCONNECTS:

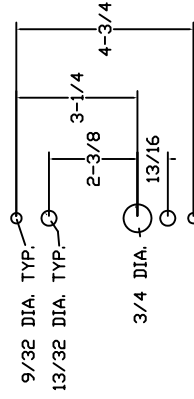
- 1) ALLEN-BRADLEY 1494D
- 2) ALLEN-BRADLEY 1494F



PANEL DEPTH	A
8"	3.84"
10"	6.75"
12"	9.50"
12"	10.50"
16"	9.50"

NOTE: WHEN A=10.50", THE PANEL WILL ACCOMMODATE THE 200A DISCONNECT. USE SLOT AND HOLE DIMENSIONS:

- B=13/16
- C=9-1/2
- D=13/16
- E=1-11/16
- F=21/64



DOOR KNOCK OUT DETAIL

REV	DESCRIPTION	DATE	APPROV

ENCLOSURES DIRECT INC.

WALL MOUNT NEMA 12 FLANGE STYLE DISCONNECT KNOCK OUT DETAIL

MODEL NUMBER SERIES N12D, N12DA, & N4D



NEMA 4 ENCLOSURE FOR FLANGE MOUNT DISCONNECT - SERIES N4D

H	W	D	Model	Weight	HA	WA	HB	WB	HC	WC	HD	WD	HE	WE	HF	SIDE	TOP	BOTTOM	LATCHING
20	21.38	8	N4D202108	50	21.25	15.5	18.13	18.13	XX	XX	17	17	15.25	15.25	4.75	2	1	1	2-point
20	21.38	10	N4D202110	52	21.25	15.5	18.13	18.13	XX	XX	17	17	15.25	15.25	7.09	2	1	1	2-point
20	21.38	12	N4D202112	54	21.25	15.5	18.13	18.13	XX	XX	17	17	15.25	15.25	11.62	2	1	1	2-point
24	21.38	8	N4D242108	58	25.25	15.5	22.13	18.13	XX	XX	21	17	19.25	15.25	4.75	2	1	1	2-point
24	21.38	10	N4D242110	61	25.25	15.5	22.13	18.13	XX	XX	21	17	19.25	15.25	7.09	2	1	1	2-point
24	21.38	12	N4D242112	64	25.25	15.5	22.13	18.13	XX	XX	21	17	19.25	15.25	11.62	2	1	1	2-point
24	25.38	8	N4D242508	68	25.25	19.5	22.13	22.13	XX	XX	21	21	19.25	19.25	4.75	2	2	2	2-point
24	25.38	10	N4D242510	70	25.25	19.5	22.13	22.13	XX	XX	21	21	19.25	19.25	7.09	2	2	2	2-point
24	25.38	12	N4D242512	73	25.25	19.5	22.13	22.13	XX	XX	21	21	19.25	19.25	11.62	2	2	2	2-point
30	21.38	8	N4D302108	70	31.25	15.5	28.13	18.13	XX	XX	27	17	25.25	15.25	4.75	2	1	1	2-point
30	21.38	10	N4D302110	76	31.25	15.5	28.13	18.13	XX	XX	27	17	25.25	15.25	7.09	2	1	1	2-point
30	21.38	12	N4D302112	82	31.25	15.5	28.13	18.13	XX	XX	27	17	25.25	15.25	11.62	2	1	1	2-point
30	25.38	8	N4D302508	82	31.25	19.5	28.13	22.13	XX	XX	27	21	25.25	19.25	4.75	2	2	2	2-point
30	25.38	10	N4D302510	86	31.25	19.5	28.13	22.13	XX	XX	27	21	25.25	19.25	7.09	2	2	2	2-point
30	25.38	12	N4D302512	90	31.25	19.5	28.13	22.13	XX	XX	27	21	25.25	19.25	11.62	2	2	2	2-point
30	31.38	8	N4D303108	102	31.25	25.5	28.13	28.13	XX	XX	27	27	25.25	25.25	4.75	2	2	2	2-point
30	31.38	10	N4D303110	108	31.25	25.5	28.13	28.13	XX	XX	27	27	25.25	25.25	7.09	2	2	2	2-point
30	31.38	12	N4D303112	114	31.25	25.5	28.13	28.13	XX	XX	27	27	25.25	25.25	11.62	2	2	2	2-point
36	25.38	8	N4D362508	96	37.25	19.5	34.13	22.13	XX	XX	33	21	31.25	19.25	4.75	3	2	2	2-point
36	25.38	10	N4D362510	102	37.25	19.5	34.13	22.13	XX	XX	33	21	31.25	19.25	7.09	3	2	2	2-point
36	25.38	12	N4D362512	108	37.25	19.5	34.13	22.13	XX	XX	33	21	31.25	19.25	11.62	3	2	2	2-point
36	25.38	16	N4D362516	112	37.25	19.5	34.13	22.13	XX	XX	33	21	31.25	19.25	11.62	3	2	2	2-point

1-877-EDIRECT (334-7328)
ENCLOSURES DIRECT INC.

FAX: (613) 723-4479
sales@buyedi.com



NEMA 4 ENCLOSURE FOR FLANGE MOUNT DISCONNECT - SERIES N4D

H	W	D	Model	Weight	HA	WA	HB	WB	HC	WC	HD	WD	HE	WE	HF	SIDE	TOP	BOTTOM	LATCHING
36	31.38	8	N4D363108	120	37.25	25.5	34.13	28.13	XX	XX	33	27	31.25	25.25	4.75	3	2	2	2-point
36	31.38	10	N4D363110	126	37.25	25.5	34.13	28.13	XX	XX	33	27	31.25	25.25	7.09	3	2	2	2-point
36	31.38	12	N4D363112	132	37.25	25.5	34.13	28.13	XX	XX	33	27	31.25	25.25	11.62	3	2	2	2-point
36	31.38	16	N4D363116	140	37.25	25.5	34.13	28.13	XX	XX	33	27	31.25	25.25	11.62	3	2	2	2-point
36	37.38	8	N4D363708	142	37.25	31.5	34.13	34.13	XX	XX	33	33	31.25	31.25	4.75	3	3	3	2-point
36	37.38	10	N4D363710	148	37.25	31.5	34.13	34.13	XX	XX	33	33	31.25	31.25	7.09	3	3	3	2-point
36	37.38	12	N4D363712	156	37.25	31.5	34.13	34.13	XX	XX	33	33	31.25	31.25	11.62	3	3	3	2-point
36	37.38	16	N4D363716	166	37.25	31.5	34.13	34.13	XX	XX	33	33	31.25	31.25	11.62	3	3	3	2-point
42	25.38	8	N4D422508	110	43.25	19.5	40.13	22.13	36	18	39	21	37.25	19.25	4.75	3	2	2	3-point
42	25.38	10	N4D422510	116	43.25	19.5	40.13	22.13	36	18	39	21	37.25	19.25	7.09	3	2	2	3-point
42	25.38	12	N4D422512	124	43.25	19.5	40.13	22.13	36	18	39	21	37.25	19.25	11.62	3	2	2	3-point
42	25.38	16	N4D422516	134	43.25	19.5	40.13	22.13	36	18	39	21	37.25	19.25	11.62	3	2	2	3-point
42	31.38	8	N4D423108	132	43.25	25.5	40.13	28.13	36	24	39	27	37.25	25.25	4.75	3	2	2	3-point
42	31.38	10	N4D423110	140	43.25	25.5	40.13	28.13	36	24	39	27	37.25	25.25	7.09	3	2	2	3-point
42	31.38	12	N4D423112	150	43.25	25.5	40.13	28.13	36	24	39	27	37.25	25.25	11.62	3	2	2	3-point
42	31.38	16	N4D423116	162	43.25	25.5	40.13	28.13	36	24	39	27	37.25	25.25	11.62	3	2	2	3-point
42	37.38	8	N4D423708	182	43.25	31.5	40.13	34.13	36	30	39	33	37.25	31.25	4.75	3	3	3	3-point
42	37.38	10	N4D423710	190	43.25	31.5	40.13	34.13	36	30	39	33	37.25	31.25	7.09	3	3	3	3-point
42	37.38	12	N4D423712	198	43.25	31.5	40.13	34.13	36	30	39	33	37.25	31.25	11.62	3	3	3	3-point
42	37.38	16	N4D423716	214	43.25	31.5	40.13	34.13	36	30	39	33	37.25	31.25	11.62	3	3	3	3-point
48	25.38	8	N4D482508	122	49.25	19.5	46.13	22.13	42	18	45	21	43.25	19.25	4.75	3	2	2	3-point
48	25.38	10	N4D482510	131	49.25	19.5	46.13	22.13	42	18	45	21	43.25	19.25	7.09	3	2	2	3-point

1-877-EDIRECT (334-7328)
ENCLOSURES DIRECT INC.

FAX: (613) 723-4479
sales@buyedi.com



NEMA 4 ENCLOSURE FOR FLANGE MOUNT DISCONNECT - SERIES N4D

H	W	D	Model	Weight	HA	WA	HB	WB	HC	WC	HD	WD	HE	WE	HF	SIDE	TOP	BOTTOM	LATCHING
48	25.38	12	N4D482512	140	49.25	19.5	46.13	22.13	42	18	45	21	43.25	19.25	11.62	3	2	2	3-point
48	25.38	16	N4D482516	157	49.25	19.5	46.13	22.13	42	18	45	21	43.25	19.25	11.62	3	2	2	3-point
48	31.38	8	N4D483108	162	49.25	25.5	46.13	28.13	42	24	45	27	43.25	25.25	4.75	3	2	2	3-point
48	31.38	10	N4D483110	173	49.25	25.5	46.13	28.13	42	24	45	27	43.25	25.25	7.09	3	2	2	3-point
48	31.38	12	N4D483112	184	49.25	25.5	46.13	28.13	42	24	45	27	43.25	25.25	11.62	3	2	2	3-point
48	31.38	16	N4D483116	204	49.25	25.5	46.13	28.13	42	24	45	27	43.25	25.25	11.62	3	2	2	3-point
48	37.38	8	N4D483708	201	49.25	31.5	46.13	34.13	42	30	45	33	43.25	31.25	4.75	3	3	3	3-point
48	37.38	10	N4D483710	208	49.25	31.5	46.13	34.13	42	30	45	33	43.25	31.25	7.09	3	3	3	3-point
48	37.38	12	N4D483712	215	49.25	31.5	46.13	34.13	42	30	45	33	43.25	31.25	11.62	3	3	3	3-point
48	37.38	16	N4D483716	230	49.25	31.5	46.13	34.13	42	30	45	33	43.25	31.25	11.62	3	3	3	3-point

1-877-EDIRECT (334-7328)
ENCLOSURES DIRECT INC.

FAX: (613) 723-4479
sales@buyedi.com