

Application:

- Suitable for housing electrical or electronic controls, instrumentation, and related wiring
- Continuously hinged door allows for easy access to internal components
- Designed for indoor or outdoor use and will protect components from dust, dirt, oil, hose directed water, and other contaminants in highly corrosive environments when sanitary conditions are a requirement

Enclosure features:

- Enclosure bodies fabricated from 14 gauge Type 316L stainless steel with seam welds that are ground smooth
- Doors fabricated from 14 gauge Type 316L stainless steel
- Includes a removable 12 gauge steel sub plate
- Door gasket is ¼" x ¾" Poron
- Ground studs are included on both the door and enclosure body
- Enclosure exterior polished to a #4 finish
- Sub plate is finished in a white polyester powder coating over a phosphated surface

Industry Standards:

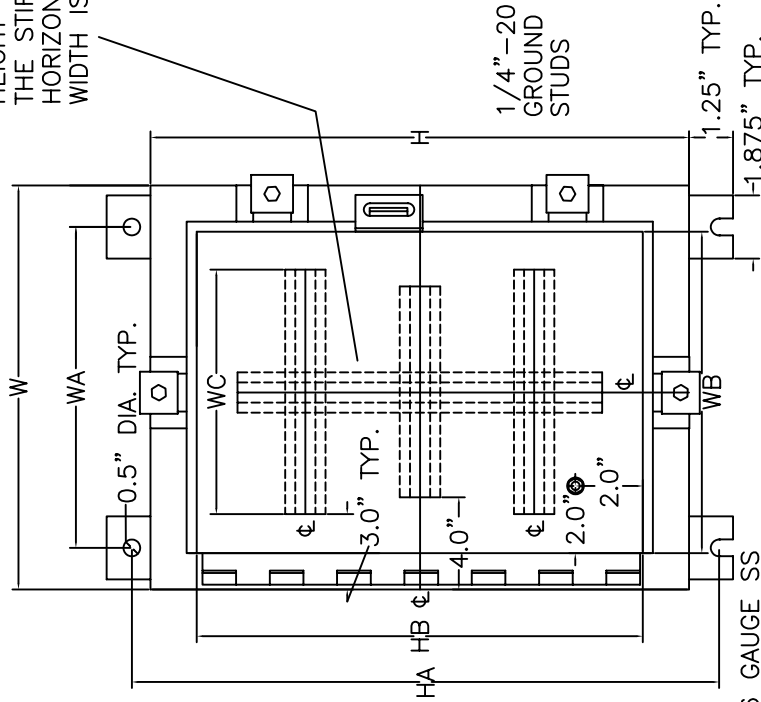
- NEMA 4X
- CSA Type 4X
- UL Type 4X

Approval:

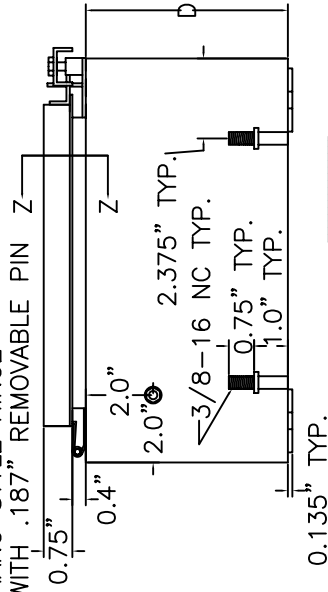
- CSA NRTL/C approved
- UL approved

A VERTICAL DOOR STIFFENER IS ADDED IF THE ENCLOSURE HEIGHT IS GREATER THAN 36" THE STIFFENER IS ADDED HORIZONTALLY IF THE WIDTH IS GREATER THAN 36"

THE SUB PLATE IS SUPPORTED INSIDE THE ENCLOSURE USING STAND OFF BOLTS. TYPICALLY THERE ARE 2 BOLTS COMMON TO EACH SIDE UNLESS THE SUB PLATE SIDE IS LONGER THAN 27", IN WHICH CASE A THIRD BOLT, CENTRED, IS ADDED. STIFFENING FOLDS ARE ADDED IF A SIDE IS LONGER THAN 21".



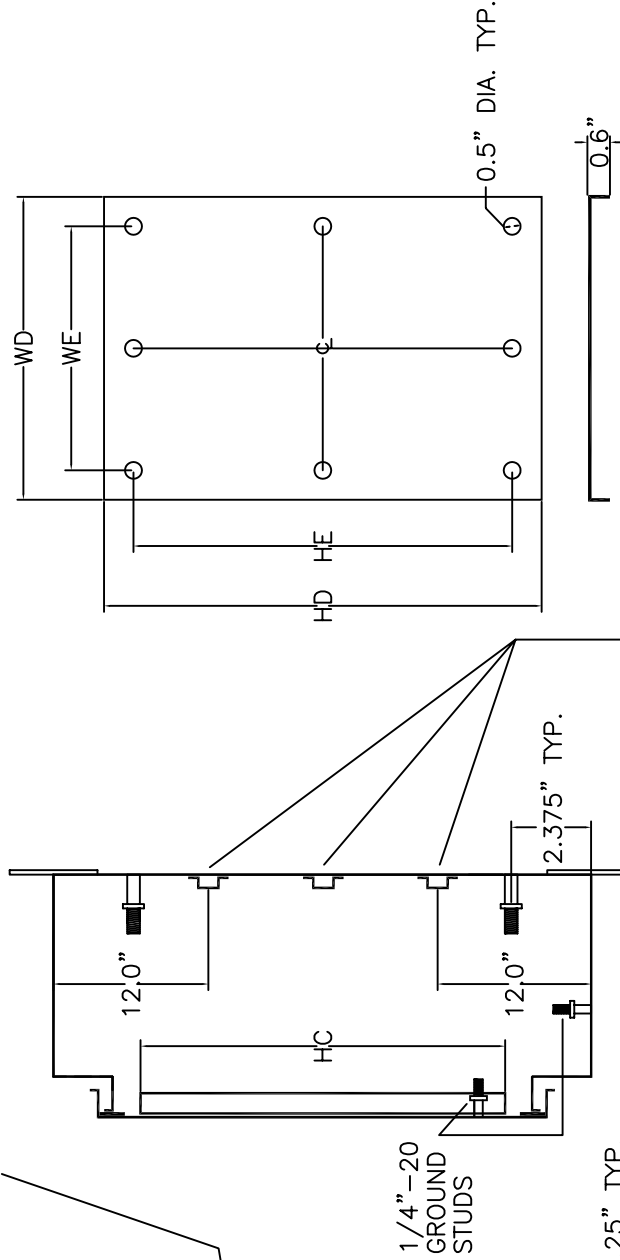
16 GAUGE SS PIANO STYLE HINGE WITH .187" REMOVABLE PIN Z



0.135" TYP.

0.25" X 0.75" GASKET INSIDE PERIMETER OF DOOR

SECTION Z-Z



THREE HORIZONTAL STIFFENERS ARE ADDED INSIDE THE ENCLOSURE IF ITS HEIGHT IS GREATER THAN 36" THE STIFFENERS ARE ADDED VERTICALLY IF THE ENCLOSURE WIDTH IS GREATER THAN 36"

NOTE 1: CLAMPS, CLAMP BASES, 1/4"-28 NF CLAMP BOLTS, WASHERS, AND RETAINING SPRINGS, MOUNTING BRACKETS, PLUS LOCKABLE LATCH PARTS ARE MADE OF SS.

NOTE 2: ALL GROUND STUDS AND STAND OFF BOLTS ARE SUPPLIED WITH NUTS AND WASHERS

REV	DESCRIPTION	DATE	APPVL
ENCLOSURES DIRECT INC.			
NEMA 4X 316L STAINLESS STEEL			
MODEL NUMBER SERIES N4SL			



NEMA 4X 316L STAINLESS STEEL SINGLE DOOR ENCLOSURE - SERIES N4SL

H	W	D	Model	Weight	HA	WA	HB	WB	HC	WC	HD	WD	SIDE	TOP	BOTTOM
12	12	6	N4SL121206	21	13.25	9.5	10.13	10.13	9	9	7.25	7.25	2	1	1
12	12	8	N4SL121208	22	13.25	9.5	10.13	10.13	9	9	7.25	7.25	2	1	1
12	12	10	N4SL121210	22	13.25	9.5	10.13	10.13	9	9	7.25	7.25	2	1	1
12	12	12	N4SL121212	23	13.25	9.5	10.13	10.13	9	9	7.25	7.25	2	1	1
12	16	6	N4SL121606	22	13.25	10	10.13	14.13	9	13	7.25	11.25	2	1	1
12	16	8	N4SL121608	23	13.25	10	10.13	14.13	9	13	7.25	11.25	2	1	1
12	16	10	N4SL121610	24	13.25	10	10.13	14.13	9	13	7.25	11.25	2	1	1
12	16	12	N4SL121612	25	13.25	10	10.13	14.13	9	13	7.25	11.25	2	1	1
12	20	6	N4SL122006	26	13.25	14	10.13	18.13	9	17	7.25	15.25	2	1	1
12	20	8	N4SL122008	28	13.25	14	10.13	18.13	9	17	7.25	15.25	2	1	1
12	20	10	N4SL122010	30	13.25	14	10.13	18.13	9	17	7.25	15.25	2	1	1
12	20	12	N4SL122012	32	13.25	14	10.13	18.13	9	17	7.25	15.25	2	1	1
12	24	6	N4SL122406	30	13.25	18	10.13	22.13	9	21	7.25	19.25	2	2	2
12	24	8	N4SL122408	32	13.25	18	10.13	22.13	9	21	7.25	19.25	2	2	2
12	24	10	N4SL122410	34	13.25	18	10.13	22.13	9	21	7.25	19.25	2	2	2
12	24	12	N4SL122412	36	13.25	18	10.13	22.13	9	21	7.25	19.25	2	2	2
16	12	6	N4SL161206	22	17.25	9.5	14.13	10.13	13	9	11.25	7.25	2	1	1
16	12	8	N4SL161208	23	17.25	9.5	14.13	10.13	13	9	11.25	7.25	2	1	1
16	12	10	N4SL161210	24	17.25	9.5	14.13	10.13	13	9	11.25	7.25	2	1	1
16	12	12	N4SL161212	25	17.25	9.5	14.13	10.13	13	9	11.25	7.25	2	1	1
16	16	6	N4SL161606	26	17.25	10	14.13	14.13	13	13	11.25	11.25	2	1	1
16	16	8	N4SL161608	27	17.25	10	14.13	14.13	13	13	11.25	11.25	2	1	1
16	16	10	N4SL161610	29	17.25	10	14.13	14.13	13	13	11.25	11.25	2	1	1

1-877-EDIRECT (334-7328)

ENCLOSURES DIRECT INC.

Section 4.6

FAX: (613) 723-4479

sales@buyedi.com

P. 96



NEMA 4X 316L STAINLESS STEEL SINGLE DOOR ENCLOSURE - SERIES N4SL

H	W	D	Model	Weight	HA	WA	HB	WB	HC	WC	HD	WD	SIDE	TOP	BOTTOM
16	16	12	N4SL161612	30	17.25	10	14.13	14.13	13	13	11.25	11.25	2	1	1
16	20	6	N4SL162006	30	17.25	14	14.13	18.13	13	17	11.25	15.25	2	1	1
16	20	8	N4SL162008	33	17.25	14	14.13	18.13	13	17	11.25	15.25	2	1	1
16	20	10	N4SL162010	35	17.25	14	14.13	18.13	13	17	11.25	15.25	2	1	1
16	20	12	N4SL162012	38	17.25	14	14.13	18.13	13	17	11.25	15.25	2	1	1
16	24	6	N4SL162406	37	17.25	18	14.13	22.13	13	21	11.25	19.25	2	2	2
16	24	8	N4SL162408	40	17.25	18	14.13	22.13	13	21	11.25	19.25	2	2	2
16	24	10	N4SL162410	43	17.25	18	14.13	22.13	13	21	11.25	19.25	2	2	2
16	24	12	N4SL162412	46	17.25	18	14.13	22.13	13	21	11.25	19.25	2	2	2
20	12	6	N4SL201206	26	21.25	9.5	18.13	10.13	17	9	15.25	7.25	2	1	1
20	12	8	N4SL201208	28	21.25	9.5	18.13	10.13	17	9	15.25	7.25	2	1	1
20	12	10	N4SL201210	30	21.25	9.5	18.13	10.13	17	9	15.25	7.25	2	1	1
20	12	12	N4SL201212	32	21.25	9.5	18.13	10.13	17	9	15.25	7.25	2	1	1
20	16	6	N4SL201606	30	21.25	10	18.13	14.13	17	13	15.25	11.25	2	1	1
20	16	8	N4SL201608	33	21.25	10	18.13	14.13	17	13	15.25	11.25	2	1	1
20	16	10	N4SL201610	35	21.25	10	18.13	14.13	17	13	15.25	11.25	2	1	1
20	16	12	N4SL201612	38	21.25	10	18.13	14.13	17	13	15.25	11.25	2	1	1
20	20	6	N4SL202006	38	21.25	14	18.13	18.13	17	17	15.25	15.25	2	1	1
20	20	8	N4SL202008	40	21.25	14	18.13	18.13	17	17	15.25	15.25	2	1	1
20	20	10	N4SL202010	42	21.25	14	18.13	18.13	17	17	15.25	15.25	2	1	1
20	20	12	N4SL202012	43	21.25	14	18.13	18.13	17	17	15.25	15.25	2	1	1
20	24	6	N4SL202406	43	21.25	18	18.13	22.13	17	21	15.25	19.25	2	2	2
20	24	8	N4SL202408	46	21.25	18	18.13	22.13	17	21	15.25	19.25	2	2	2

1-877-EDIRECT (334-7328)

ENCLOSURES DIRECT INC.

Section 4.6

FAX: (613) 723-4479

sales@buyedi.com

P. 97



NEMA 4X 316L STAINLESS STEEL SINGLE DOOR ENCLOSURE - SERIES N4SL

H	W	D	Model	Weight	HA	WA	HB	WB	HC	WC	HD	WD	SIDE	TOP	BOTTOM
20	24	10	N4SL202410	50	21.25	18	18.13	22.13	17	21	15.25	19.25	2	2	2
20	24	12	N4SL202412	53	21.25	18	18.13	22.13	17	21	15.25	19.25	2	2	2
24	12	6	N4SL241206	30	25.25	9.5	22.13	10.13	21	9	19.25	7.25	2	1	1
24	12	8	N4SL241208	32	25.25	9.5	22.13	10.13	21	9	19.25	7.25	2	1	1
24	12	10	N4SL241210	34	25.25	9.5	22.13	10.13	21	9	19.25	7.25	2	1	1
24	12	12	N4SL241212	36	25.25	9.5	22.13	10.13	21	9	19.25	7.25	2	1	1
24	16	6	N4SL241606	37	25.25	10	22.13	14.13	21	13	19.25	11.25	2	1	1
24	16	8	N4SL241608	40	25.25	10	22.13	14.13	21	13	19.25	11.25	2	1	1
24	16	10	N4SL241610	43	25.25	10	22.13	14.13	21	13	19.25	11.25	2	1	1
24	16	12	N4SL241612	46	25.25	10	22.13	14.13	21	13	19.25	11.25	2	1	1
24	20	6	N4SL242006	43	25.25	14	22.13	18.13	21	17	19.25	15.25	2	1	1
24	20	8	N4SL242008	46	25.25	14	22.13	18.13	21	17	19.25	15.25	2	1	1
24	20	10	N4SL242010	50	25.25	14	22.13	18.13	21	17	19.25	15.25	2	1	1
24	20	12	N4SL242012	53	25.25	14	22.13	18.13	21	17	19.25	15.25	2	1	1
24	24	6	N4SL242406	50	25.25	18	22.13	22.13	21	21	19.25	19.25	2	2	2
24	24	8	N4SL242408	54	25.25	18	22.13	22.13	21	21	19.25	19.25	2	2	2
24	24	10	N4SL242410	58	25.25	18	22.13	22.13	21	21	19.25	19.25	2	2	2
24	24	12	N4SL242412	62	25.25	18	22.13	22.13	21	21	19.25	19.25	2	2	2
30	16	6	N4SL301606	56	31.25	10	28.13	14.13	27	13	25.25	11.25	2	1	1
30	16	8	N4SL301608	60	31.25	10	28.13	14.13	27	13	25.25	11.25	2	1	1
30	16	10	N4SL301610	64	31.25	10	28.13	14.13	27	13	25.25	11.25	2	1	1
30	16	12	N4SL301612	68	31.25	10	28.13	14.13	27	13	25.25	11.25	2	1	1
30	20	6	N4SL302006	66	31.25	14	28.13	18.13	27	17	25.25	15.25	2	1	1

1-877-EDIRECT (334-7328)

ENCLOSURES DIRECT INC.

Section 4.6

FAX: (613) 723-4479

sales@buyedi.com

P. 98



NEMA 4X 316L STAINLESS STEEL SINGLE DOOR ENCLOSURE - SERIES N4SL

H	W	D	Model	Weight	HA	WA	HB	WB	HC	WC	HD	WD	SIDE	TOP	BOTTOM
30	20	8	N4SL302008	70	31.25	14	28.13	18.13	27	17	25.25	15.25	2	1	1
30	20	10	N4SL302010	76	31.25	14	28.13	18.13	27	17	25.25	15.25	2	1	1
30	20	12	N4SL302012	82	31.25	14	28.13	18.13	27	17	25.25	15.25	2	1	1
30	24	6	N4SL302406	76	31.25	18	28.13	22.13	27	21	25.25	19.25	2	2	2
30	24	12	N4SL302412	90	31.25	18	28.13	22.13	27	21	25.25	19.25	2	2	2
30	30	6	N4SL303006	96	31.25	24	28.13	28.13	27	27	25.25	25.25	2	2	2
30	30	10	N4SL303010	108	31.25	24	28.13	28.13	27	27	25.25	25.25	2	2	2
30	30	12	N4SL303012	114	31.25	24	28.13	28.13	27	27	25.25	25.25	2	2	2
36	20	8	N4SL362008	90	37.25	14	34.13	18.13	33	17	31.25	15.25	3	1	1
36	20	10	N4SL362010	96	37.25	14	34.13	18.13	33	17	31.25	15.25	3	1	1
36	20	12	N4SL362012	102	37.25	14	34.13	18.13	33	17	31.25	15.25	3	1	1
36	20	16	N4SL362016	110	37.25	14	34.13	18.13	33	17	31.25	15.25	3	1	1
36	24	8	N4SL362408	96	37.25	18	34.13	22.13	33	21	31.25	19.25	3	2	2
36	24	10	N4SL362410	105	37.25	18	34.13	22.13	33	21	31.25	19.25	3	2	2
36	24	12	N4SL362412	108	37.25	18	34.13	22.13	33	21	31.25	19.25	3	2	2
36	24	16	N4SL362416	112	37.25	18	34.13	22.13	33	21	31.25	19.25	3	2	2
36	30	8	N4SL363008	120	37.25	24	34.13	28.13	33	27	31.25	25.25	3	2	2
36	30	10	N4SL363010	124	37.25	24	34.13	28.13	33	27	31.25	25.25	3	2	2
36	30	12	N4SL363012	132	37.25	24	34.13	28.13	33	27	31.25	25.25	3	2	2
36	30	16	N4SL363016	140	37.25	24	34.13	28.13	33	27	31.25	25.25	3	2	2
36	36	8	N4SL363608	142	37.25	30	34.13	34.13	33	33	31.25	31.25	3	3	3
36	36	10	N4SL363610	148	37.25	30	34.13	34.13	33	33	31.25	31.25	3	3	3
36	36	12	N4SL363612	156	37.25	30	34.13	34.13	33	33	31.25	31.25	3	3	3

1-877-EDIRECT (334-7328)

ENCLOSURES DIRECT INC.

Section 4.6

FAX: (613) 723-4479

sales@buyedi.com

P. 99



NEMA 4X 316L STAINLESS STEEL SINGLE DOOR ENCLOSURE - SERIES N4SL

H	W	D	Model	Weight	HA	WA	HB	WB	HC	WC	HD	WD	SIDE	TOP	BOTTOM
36	36	16	N4SL363616	166	37.25	30	34.13	34.13	33	33	31.25	31.25	3	3	3
42	24	8	N4SL422408	110	43.25	18	40.13	22.13	39	21	37.25	19.25	3	2	2
42	24	10	N4SL422410	116	43.25	18	40.13	22.13	39	21	37.25	19.25	3	2	2
42	24	12	N4SL422412	124	43.25	18	40.13	22.13	39	21	37.25	19.25	3	2	2
42	24	16	N4SL422416	134	43.25	18	40.13	22.13	39	21	37.25	19.25	3	2	2
42	30	8	N4SL423008	132	43.25	24	40.13	28.13	39	27	37.25	25.25	3	2	2
42	30	10	N4SL423010	140	43.25	24	40.13	28.13	39	27	37.25	25.25	3	2	2
42	30	12	N4SL423012	150	43.25	24	40.13	28.13	39	27	37.25	25.25	3	2	2
42	30	16	N4SL423016	162	43.25	24	40.13	28.13	39	27	37.25	25.25	3	2	2
42	36	8	N4SL423608	182	43.25	30	40.13	34.13	39	33	37.25	31.25	3	3	3
42	36	10	N4SL423610	192	43.25	30	40.13	34.13	39	33	37.25	31.25	3	3	3
42	36	12	N4SL423612	198	43.25	30	40.13	34.13	39	33	37.25	31.25	3	3	3
42	36	16	N4SL423616	214	43.25	30	40.13	34.13	39	33	37.25	31.25	3	3	3
48	24	8	N4SL482408	122	49.25	18	46.13	22.13	45	21	43.25	19.25	3	2	2
48	24	10	N4SL482410	131	49.25	18	46.13	22.13	45	21	43.25	19.25	3	2	2
48	24	12	N4SL482412	143	49.25	18	46.13	22.13	45	21	43.25	19.25	3	2	2
48	24	16	N4SL482416	157	49.25	18	46.13	22.13	45	21	43.25	19.25	3	2	2
48	30	8	N4SL483008	162	49.25	24	46.13	28.13	45	27	43.25	25.25	3	2	2
48	30	10	N4SL483010	173	49.25	24	46.13	28.13	45	27	43.25	25.25	3	2	2
48	30	12	N4SL483012	187	49.25	24	46.13	28.13	45	27	43.25	25.25	3	2	2
48	30	16	N4SL483016	204	49.25	24	46.13	28.13	45	27	43.25	25.25	3	2	2
48	36	8	N4SL483608	201	49.25	30	46.13	34.13	45	33	43.25	31.25	3	3	3
48	36	10	N4SL483610	208	49.25	30	46.13	34.13	45	33	43.25	31.25	3	3	3

1-877-EDIRECT (334-7328)

ENCLOSURES DIRECT INC.

Section 4.6

FAX: (613) 723-4479

sales@buyedi.com

P. 100



NEMA 4X 316L STAINLESS STEEL SINGLE DOOR ENCLOSURE - SERIES N4SL

H	W	D	Model	Weight	HA	WA	HB	WB	HC	WC	HD	WD	SIDE	TOP	BOTTOM
48	36	12	N4SL483612	222	49.25	30	46.13	34.13	45	33	43.25	31.25	3	3	3
48	36	16	N4SL483616	238	49.25	30	46.13	34.13	45	33	43.25	31.25	3	3	3

1-877-EDIRECT (334-7328)
ENCLOSURES DIRECT INC.

FAX: (613) 723-4479
sales@buyedi.com